

SURFBOARDS®



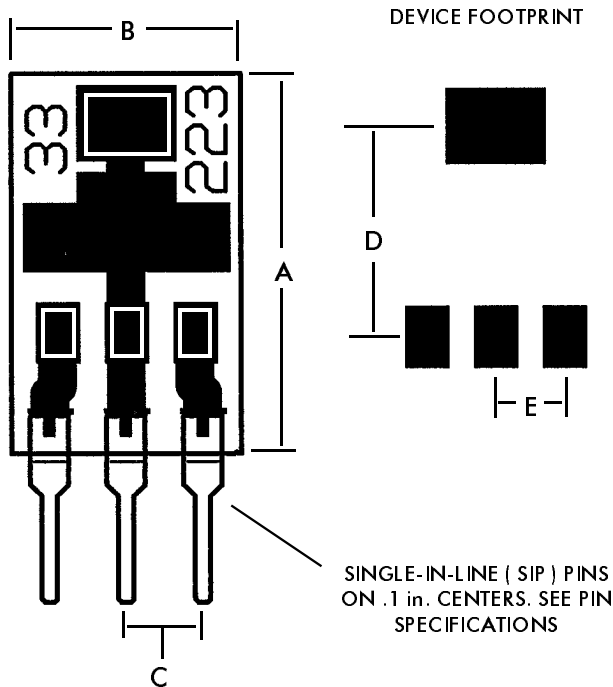
THE BREADBOARDING MEDIUM FOR SURFACE MOUNT™

APPLICATION SPECIFIC ADAPTERS

IDS33223 3-9-99

MODEL **33223**

FOR **SOT-223**
SURFACE MOUNT DEVICES



PINS ON .100 in. CENTERS OFFER COMPATIBILITY WITH BREADBOARDS AND SOCKETS.

FOR PROTOTYPING, DEVICE EVALUATION OR TEST, OR SMD TO THROUGH HOLE CONVERSION.

NOTE: CIRCUIT TRACE FOILS AND OUTPUT PINS MAY NOT BE SUITABLE FOR OPERATION AT HIGHER CURRENT LEVELS. EXTREME TEMPERATURE RISE MAY RESULT IN BOARD OR PIN FAILURE.

SEE MODEL 33623 FOR HIGHER CURRENT APPLICATIONS USING SOT-223 DEVICES

PIN SPECIFICATIONS / TOLERANCES

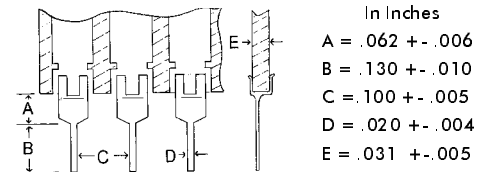


FIG.	INCHES	MM
A	.500	12.70
B	.300	7.62
C	.100	2.54
D	.275	6.98
E	.090	2.28

BOARD SPECIFICATIONS

BOARD MATERIAL: .031 ± .005 in. Thick G-10 FR-4 Glass Epoxy or equivalent.

CIRCUITS: 1oz Copper with solder coated pads.

TOLERANCES: Given in inches
Board Size ± .020 / OAL ± .040
Circuit pattern/position ± .005

Copyright 1997, 1999 by Capital Advanced Technologies, Inc. All rights reserved. Surfboards are a registered trademark of Capital Advanced technologies, Inc. All other trademarks or registered trademarks are property of their respective owners. Availability, specifications, and prices are subject to change without notice. All information given is believed to be accurate but is not guaranteed. The user of information given or products represented by such information is responsible for determining the suitability of said information or products for a given purpose.

CAPITAL ADVANCED TECHNOLOGIES, INC.

CAROL STREAM, ILLINOIS, USA.

PHONE 630-690-1696 WWW.CapitalAdvanced.Com FAX-ON-DEMAND 630-690-2865